

## 900 MHz to 930 MHz Concave Shaped Antenna, Monopole, RP SMA Male Connector, 2 dBi Gain

### KPANRBD1041



#### Features

- 900-930 MHz, 2 dBi Gain
- SMA male connector
- Plug and play
- VSWR < 2:1
- Linear polarization
- Monopole antenna

#### Applications

- Public Safety, security, construction sites
- IOT sensors and trackers
- Wireless communications
- Remote control
- Industrial monitoring and tracking
- Amateur radio
- RFID applications
- Asset tracking and management
- Wireless metering and paging systems

#### Description

The KP performance KPANRBD1041 is a 900 MHz to 930 MHz concave shaped antenna that is ideal for public safety, security, construction, wireless communications, RFID, asset tracking, inventory management, wireless metering systems, wireless paging systems, remote control, amateur radio, industrial monitoring and data transmission applications. This IPx7-rated communication antenna has a black radome made from TPEE or ABS material. Our antenna is 0.55 inches wide, 3.82 inches long and 0.55 inches tall.

These omni antennas have a waterproof design, linear polarization and a RP-SMA type male connector. This IPx7-rated KPANRBD1041 antenna transmits high-power signals, increasing the signal strength, thus providing improved coverage, better-broadcast control and faster speed. KP performance monopole antenna has a gain of 2 dBi for the 900 MHz to 930 MHz frequency range. Our black colored omnidirectional antenna functions between -40 to 65 degrees C and has 50 ohms impedance.

The RP-SMA male connector on the communication antenna enables it to be used vertically, at a straight angle, or at any angle in between. KP Performance 2 dBi antennas have a sturdy outdoor design, a high power handling capacity, and all of their components are DC grounded for lightning safety. Our high-quality KPANRBD1041 omnidirectional antenna has a maximum input VSWR of 2:1, which results in the best power transfer and reduced losses.

The KP performance has one of the largest in-stock collections of 2 dBi gain omni directional antennas for all your critical equipment and power sources. Quickly make your online purchase right now to take advantage of our same-day shipping. For further information on similar products, our expert technical support and knowledgeable sales team can help you get the 900 MHz to 930 MHz concave shaped antenna as per your requirements.

#### Configuration

|                   |                  |
|-------------------|------------------|
| Design            | Rubber Duck      |
| Band Type         | Single           |
| Radiation Pattern | Omni Directional |
| Polarization      | Linear           |
| Connector Type    | SMA Male         |

#### Electrical Specifications

| Description     | Minimum | Typical | Maximum | Units |
|-----------------|---------|---------|---------|-------|
| Frequency Range | 900     |         | 930     | MHz   |
| Input VSWR      |         |         | 2:1     |       |

Click the following link (or enter part number in "SEARCH" on website) to obtain additional part information including price, inventory and certifications: [900 MHz to 930 MHz Concave Shaped Antenna, Monopole, RP SMA Male Connector, 2 dBi Gain KPANRBD1041](#)

900 MHz to 930 MHz Concave Shaped Antenna,  
 Monopole, RP SMA Male Connector, 2 dBi Gain

**KPANRBD1041**



|             |    |       |
|-------------|----|-------|
| Impedance   | 50 | Ohms  |
| Gain        | 0  | 1 dBi |
| Input Power | 10 | Watts |

**Mechanical Specifications**

|                 |                      |
|-----------------|----------------------|
| Radome Material | TPEE/ABS             |
| <b>Size</b>     |                      |
| Length          | 3.82 in [97.03 mm]   |
| Width           | 0.55 in [13.97 mm]   |
| Height          | 0.55 in [13.97 mm]   |
| Weight          | 0.0242 lbs [10.98 g] |

**Environmental Specifications**

|                    |                  |
|--------------------|------------------|
| <b>Temperature</b> |                  |
| Operating Range    | -40 to +65 deg C |
| Storage Range      | -40 to +80 deg C |
| Environment        | Waterproof       |

**Compliance Certifications** (see [product page](#) for current document)

|           |      |
|-----------|------|
| IP Rating | IPx7 |
|-----------|------|

**Plotted and Other Data**

Notes:

Click the following link (or enter part number in "SEARCH" on website) to obtain additional part information including price, inventory and certifications:  
[900 MHz to 930 MHz Concave Shaped Antenna, Monopole, RP SMA Male Connector, 2 dBi Gain KPANRBD1041](#)

900 MHz to 930 MHz Concave Shaped Antenna,  
Monopole, RP SMA Male Connector, 2 dBi Gain

**KPANRBD1041**



---

## Appendix

**Electrical Downtilt:** Angle in the antenna's elevation pattern in which the maximum gain occurs.

**Gain:** Antenna's average gain.

**Front to Back Ratio @ 180°±30°:** Average difference between the antenna's maximum gain and the maximum gain in the antenna's back lobe over ±30° angles.

**Cross-polarization Ratio (dB):** Typical difference between the co-polarization and cross-polarization gain across the sector's 3 dB Beam Width.

Dedicated to serving the needs of the Wireless Internet Service Provider (WISP) market, KP Performance Antennas offers purpose built products that reliably perform in the field. KP Performance Antennas product line consists of Yagi, Grid, Omni, Dish and other style antennas that operate in the 900 MHz, 2.4 GHz, 3 GHz, and 5 GHz frequencies.

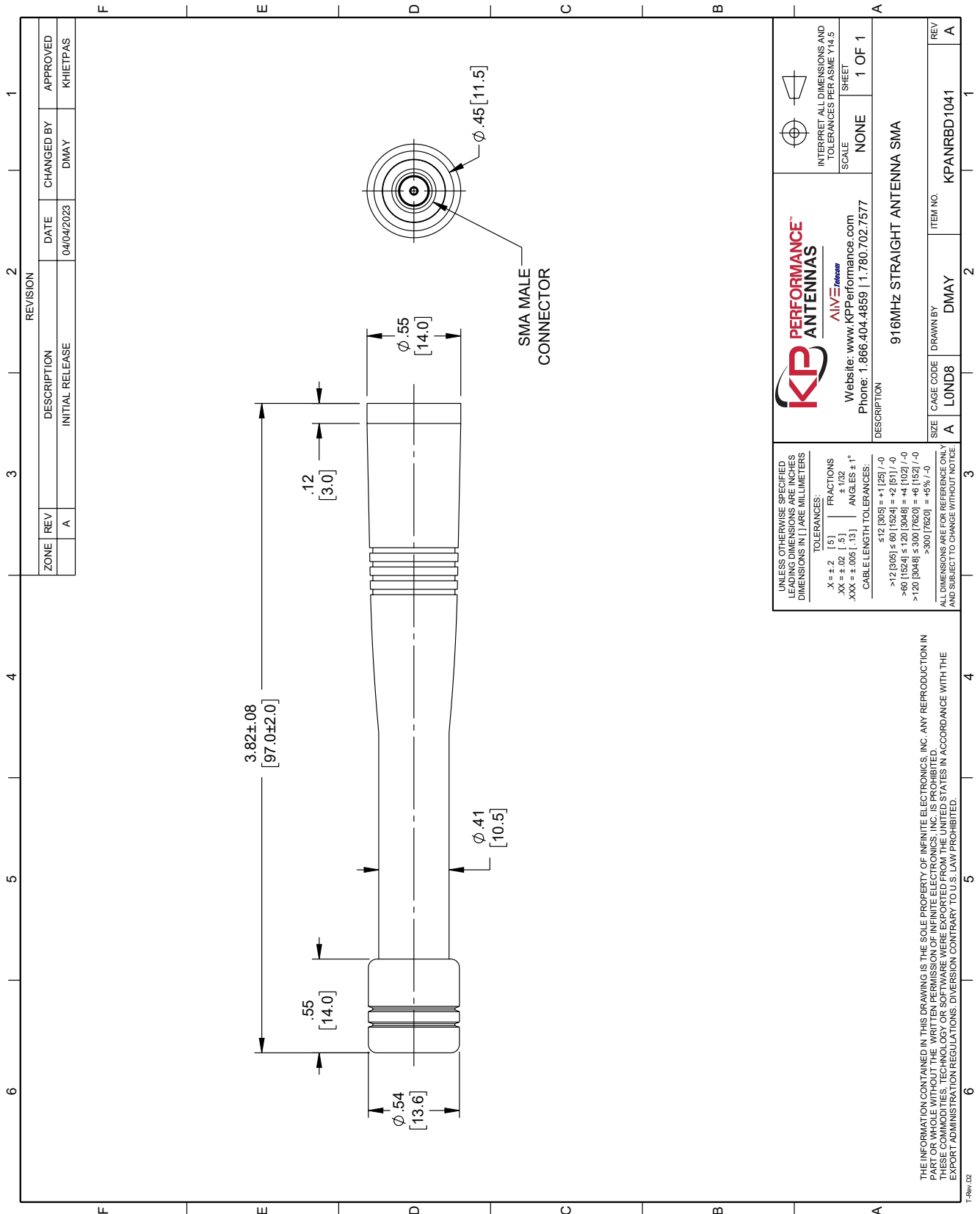
Click the following link (or enter part number in "SEARCH" on website) to obtain additional part information including price, inventory and certifications: [900 MHz to 930 MHz Concave Shaped Antenna, Monopole, RP SMA Male Connector, 2 dBi Gain KPANRBD1041](#)

URL: <https://www.kpperformance.com/900-mhz-to-935-mhz-concave-shaped-antenna-monopole-rp-sma-male-connector-2-dbi-gain-kpanrbd1041-p.aspx>

The information contained within this document is accurate to the best of our knowledge and representative of the part described herein. It may be necessary to make modifications to the part and/or the documentation of the part in order to implement improvements. KP Performance reserves the right to make such changes as required. Unless otherwise stated, all specifications are nominal. KP Performance does not make any representation or warranty regarding the suitability of the part described herein for any particular purpose, and KP Performance does not assume liability arising out of the use of any part or document.

900 MHz to 930 MHz Concave Shaped Antenna, Monopole, RP SMA Male Connector, 2 dBi Gain

KPANRBD1041 CAD Drawing



| ZONE |  | REVISION    |                 | DATE       |      | CHANGED BY |  | APPROVED |          |
|------|--|-------------|-----------------|------------|------|------------|--|----------|----------|
| A    |  | DESCRIPTION | INITIAL RELEASE | 04/04/2023 | DMAY |            |  |          | KHIETPAS |

**KP PERFORMANCE™ ANTENNAS**  
 AIVE Telecom  
 Website: www.kpperformance.com  
 Phone: 1.866.404.4859 | 1.780.702.7577

INTERPRET ALL DIMENSIONS AND TOLERANCES PER ASME Y14.5  
 SCALE NONE  
 SHEET 1 OF 1

UNLESS OTHERWISE SPECIFIED, LEADING DIMENSIONS ARE INCHES, DIMENSIONS IN [ ] ARE MILLIMETERS.  
 TOLERANCES:  
 X = ±.2 [5] FRACTIONS  
 .XX = ±.02 [5] ANGLES ± 1°  
 .XXX = ±.005 [13]  
 CABLE LENGTH TOLERANCES:  
 ≤ 12 [305] = ± 1/25 / -0  
 > 12 [305] ≤ 60 [1524] = ± 2 [51] / -0  
 > 60 [1524] ≤ 120 [3048] = ± 4 [102] / -0  
 > 120 [3048] ≤ 300 [7620] = ± 6 [152] / -0  
 > 300 [7620] = ± 5% / -0

ALL DIMENSIONS ARE FOR REFERENCE ONLY AND SUBJECT TO CHANGE WITHOUT NOTICE.

DESCRIPTION: 916MHz STRAIGHT ANTENNA SMA

|      |           |          |             |
|------|-----------|----------|-------------|
| SIZE | CAGE CODE | DRAWN BY | ITEM NO.    |
| A    | LOND8     | DMAY     | KPANRBD1041 |

THE INFORMATION CONTAINED IN THIS DRAWING IS THE SOLE PROPERTY OF INFINITE ELECTRONICS, INC. ANY REPRODUCTION IN PART OR WHOLE WITHOUT THE WRITTEN PERMISSION OF INFINITE ELECTRONICS, INC. IS PROHIBITED. THESE COMMODITIES, TECHNOLOGY OR SOFTWARE WERE EXPORTED FROM THE UNITED STATES IN ACCORDANCE WITH THE EXPORT ADMINISTRATION REGULATIONS. DIVERSION CONTRARY TO U.S. LAW PROHIBITED.