

617 to 7125 MHz Wi-Fi 6E Omni Antenna, 3 dBi Gain, NMO Connector Black

KPANOM1056



Features

- NMO Connector
- Vertical Polarization
- Outdoor Rated Omnidirectional Antenna
- 2.4 GHz, 5 GHz, 6 GHz Wi-Fi Bands
- 5 dBi gain
- 100 Watt Max Power

Applications

- Infotainment systems, Routers, Wi-Fi hotspots, HD video transmission, Gateways, Dash cameras, Public transportation
- Connected cars or self-driving cars, Fleet management, Logistics
- Public Safety Networks
- IoT, Industrial IoT, Zigbee, Bluetooth, Wi-Fi

Description

The KPANOM1056 Wi-Fi 6e Omni Antenna from KP Performance is a high performance omnidirectional antenna designed for the 617 MHz to 7125 MHz bands and is available to ship same day. It is a UV protected, outdoor rated antenna with omni-directional pattern. The KPANOM1056 is ideally suited for 802.11 protocols including 802.11ax as well as IoT, Zigbee and Bluetooth.

The KP Performance high performance omni KPANOM1056 is a rugged antenna providing broad coverage, low latency, increased network capacity and 3 dBi gain. This NMO omnidirectional antenna is suitable for commercial radios and access points in public and private networks that are equipped with NMO Type connectors.

This Wi-Fi 6e KPANOM1056 omni antenna with NMO connectors, as well as our wide selection of superior quality RF parts, ships same day. Contact our knowledgeable and friendly technical support and sales staff for your answers on antennas or other KP Performance products.

Configuration

Design	Omni
Application Band	Wi-Fi 6E
Band Type	Dual
Radiation Pattern	Omni Directional
Polarization	Vertical
Connector Type	NMO
Number of Ports	1

Electrical Specifications

Description	Minimum	Typical	Maximum	Units
Frequency Range	617		7,125	MHz
Input VSWR			2.5:1	
Impedance		50		Ohms
Gain Variation		±0.5		dBi
Input Power			100	Watts

Specifications by Band

Click the following link (or enter part number in "SEARCH" on website) to obtain additional part information including price, inventory and certifications:
[617 to 7125 MHz Wi-Fi 6E Omni Antenna, 3 dBi Gain, NMO Connector Black KPANOM1056](#)

617 to 7125 MHz Wi-Fi 6E Omni Antenna,
 3 dBi Gain, NMO Connector Black

KPANOM1056



Description	Band 1	Band 2	Band 3	Band 4	Band 5	Units
Range	0.617 to 0.96	1.71 to 7.125				GHz
Gain	2	5				dBi
Horizontal HPBW	360	360				Degrees
Vertical HPBW	60	45				Degrees

Mechanical Specifications

Radome Material	UV Resistant ABS
Size	
Length	3.75 in [95.25 mm]
Width	1.6 in [40.64 mm]
Height	1.6 in [40.64 mm]
Weight	0.45 lbs [204.12 g]

Environmental Specifications

Temperature	
Operating Range	-40 to +85 deg C
Humidity	5 to 95

Plotted and Other Data

Notes:

Click the following link (or enter part number in "SEARCH" on website) to obtain additional part information including price, inventory and certifications:
[617 to 7125 MHz Wi-Fi 6E Omni Antenna, 3 dBi Gain, NMO Connector Black KPANOM1056](#)

617 to 7125 MHz Wi-Fi 6E Omni Antenna,
3 dBi Gain, NMO Connector Black

KPANOM1056



Appendix

Electrical Downtilt: Angle in the antenna's elevation pattern in which the maximum gain occurs.

Gain: Antenna's average gain.

Front to Back Ratio @ 180°±30°: Average difference between the antenna's maximum gain and the maximum gain in the antenna's back lobe over ±30° angles.

Cross-polarization Ratio (dB): Typical difference between the co-polarization and cross-polarization gain across the sector's 3 dB Beam Width.

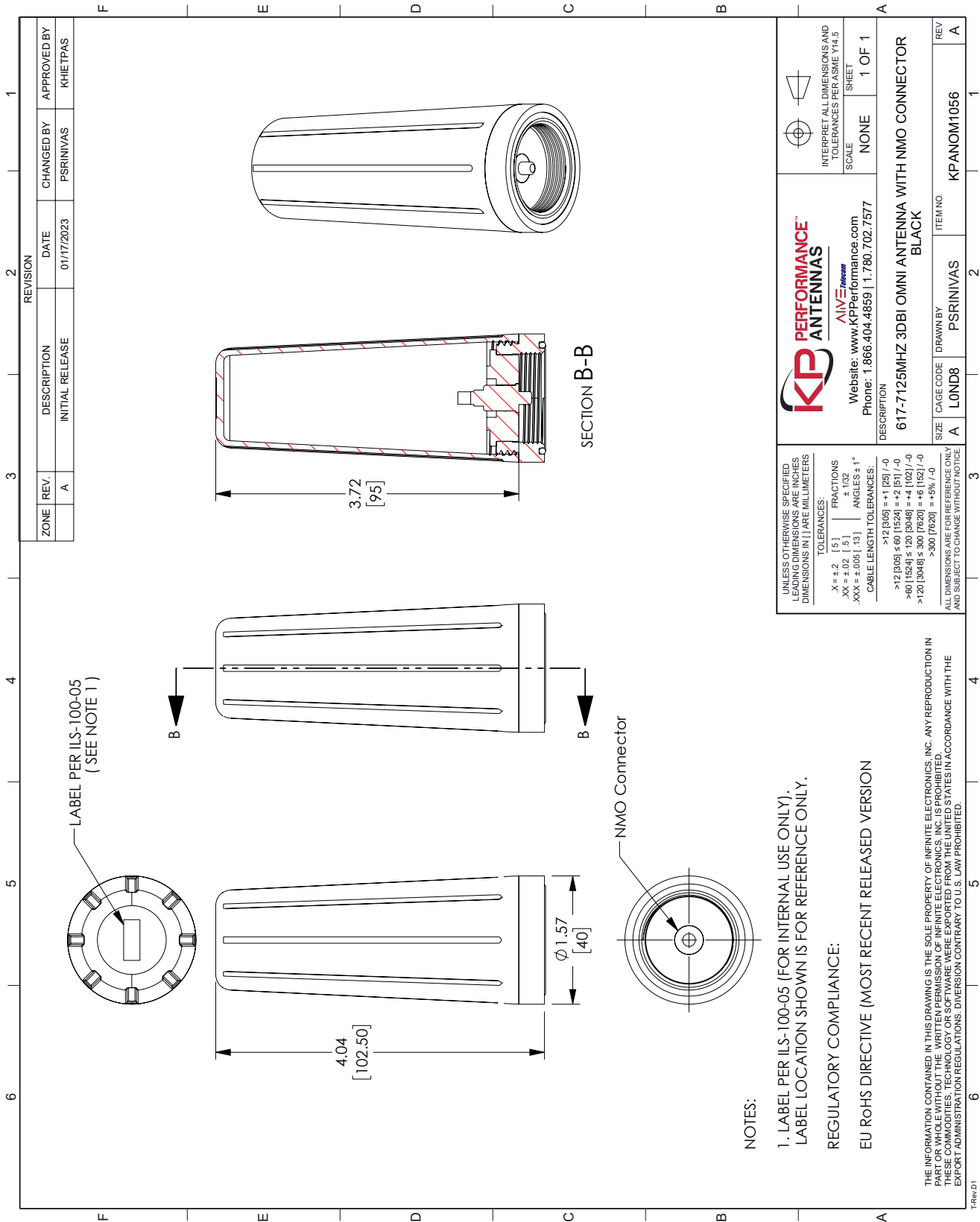
Dedicated to serving the needs of the Wireless Internet Service Provider (WISP) market, KP Performance Antennas offers purpose built products that reliably perform in the field. KP Performance Antennas product line consists of Yagi, Grid, Omni, Dish and other style antennas that operate in the 900 MHz, 2.4 GHz, 3 GHz, and 5 GHz frequencies.

Click the following link (or enter part number in "SEARCH" on website) to obtain additional part information including price, inventory and certifications: [617 to 7125 MHz Wi-Fi 6E Omni Antenna, 3 dBi Gain, NMO Connector Black KPANOM1056](https://www.kpperformance.com/617-to-7125-mhz-wi-fi-6e-omni-antenna-3-dbi-gain-nmo-connector-black-kpanom1056)

URL: <https://www.kpperformance.com/617-to-7125-mhz-wi-fi-6e-omni-antenna-3-dbi-gain-nmo-connector-black-kpanom1056-p.aspx>

The information contained within this document is accurate to the best of our knowledge and representative of the part described herein. It may be necessary to make modifications to the part and/or the documentation of the part in order to implement improvements. KP Performance reserves the right to make such changes as required. Unless otherwise stated, all specifications are nominal. KP Performance does not make any representation or warranty regarding the suitability of the part described herein for any particular purpose, and KP Performance does not assume liability arising out of the use of any part or document.

KPANOM1056 CAD Drawing



REVISION		DATE	CHANGED BY	APPROVED BY
ZONE	REV.	DESCRIPTION	INITIAL RELEASE	
	A			
		INITIAL RELEASE	PSRINIVAS	KHIEPTAS

		INTERPRET ALL DIMENSIONS AND TOLERANCES PER ASME Y14.5 SCALE: NONE SHEET: 1 OF 1	
Website: www.KPperformance.com Phone: 1.866.404.4859 1.780.702.7577		DESCRIPTION: 617-7125MHZ 3DBI OMNI ANTENNA WITH NMO CONNECTOR BLACK	
SIZE	CAGE CODE	DRAWN BY	ITEM NO.
A	LOND8	PSRINIVAS	KPANOM1056