

806 to 960 MHz + 1710 to 2700 MHz Log Periodic Antenna, Low PIM, 9 to 10 dBi, V-pol, Dual band, Type N Female connector

KP-LP1016



Features

- Frequency coverage for 806 MHz to 2700 MHz
- Very High Gain 10 dBi Low PIM Directional Antenna
- Each connector covers wide band of frequencies
- Easy Install universal mounting bracket provided
- Weatherproof ABS – UV Resistance PVC radome
- Pigtail - 8 inches
- N-Type Female connector

Applications

- Point-to-point, LPWAN, LoRA, LTE-M, NB-IoT, IoT, M2M applications
- 5G / 4G LTE B1 to B10, B12 to B20, B23, B24, B25, B28 / 3G / GSM / AWS / WLAN operation supported
- 5G Bands supported
- DAS (Distributed Antenna Systems)
- IEEE 802.11a / b / g / n / ac / ad / ah/ ax Wi-Fi applications
- Public safety, utilities, CCTV and local radio coverage
- smart cities expansion for coverage and IOT / IIOT

Description

The KP-LP1016 from KP Performance Antennas is a high-performance log periodic antenna specifically designed to aesthetically pleasing design. The KP-LP1016 operate from 806 to 2700 MHz for point-to-point applications, 5G, LTE, CMDA, LoRA, IoT, WIFI, where directivity and coverage are very important. The KP Performance Antennas KP-LP1016 has 10 dBi of gain which is ideal for boosting.

The KP Performance Antennas KP-LP1016 has Vertical polarization, 80 horizontal beamwidth, and 65 vertical beamwidth for point-to-point communication. The included mounting brackets allow for either vertical or horizontal mounting configurations with easy install instructions. Where there is weak coverage and needs to reach further distances, log periodic antennas are best. The directional KP-LP1016 antenna has 1 Type N Female connector on a 8 inches long pigtail.

KP Performance KP-LP1016 log periodic antenna operates in 5G bands n1, n2, n3, n5, n7, n8, n18, n20, n25, n26, n30, n34, n38, n39, n40, n41, n53, n65, n66, n67, n70, n80, n81, n82, n84, n86, n89, n90, n91, n92, n93, n94, n95, n97, n98 with a 10 dBi max. This 806 to 2700 MHz 5G directional log periodic antenna with Type N connector is in stock and ready to ship the same day. Our expert technical support and friendly, knowledgeable customer service personnel are available to assist you with your particular needs for high performance Log Periodic antenna engineered for superior performance antennas.

Configuration

Design	Log Periodic
Band Type	Multi
Radiation Pattern	Directional
Polarization	Vertical
Cable Type	RG58U
Cable Length	7.87 in [199.9 mm]
Connector Type	N Female
Number of Ports	1

Electrical Specifications

Description	Minimum	Typical	Maximum	Units
Frequency Range	806		2,700	MHz
Input VSWR		1.7:1	2:1	
Impedance		50		Ohms

Click the following link (or enter part number in "SEARCH" on website) to obtain additional part information including price, inventory and certifications: [806 to 960 MHz + 1710 to 2700 MHz Log Periodic Antenna, Low PIM, 9 to 10 dBi, V-pol, Dual band, Type N Female connector KP-LP1016](#)

806 to 960 MHz + 1710 to 2700 MHz Log Periodic Antenna, Low PIM, 9 to 10 dBi, V-pol, Dual band, Type N Female connector

KP-LP1016



Gain	9	10	dBi
Horizontal Beamwidth	60	80	Degrees
Vertical Beamwidth	50	65	Degrees
Input Power		100	Watts

Specifications by Band

Description	Band 1	Band 2	Band 3	Band 4	Band 5	Units
Range	0.698 to 0.96	1.71 to 2.7				GHz
Gain	9	10				dBi
Horizontal HPBW	80	60				Degrees
Vertical HPBW	65	50				Degrees
VSWR Max	2:1	1.7:1				
Maximum Input Power	100	100				Watts

Mechanical Specifications

Radome Material	ABS
Width	8.27 in [210.06 mm]
Height	11.61 in [294.89 mm]
Weight	1.54 lbs [698.53 g]

Environmental Specifications

Temperature

Operating Range	-40 to +60 deg C
Wind Survivability	150 MPH [241.4 KPH]
Wind Loading	23.5 lbs at 100 MPH 36.2 lbs at 125 MPH

Plotted and Other Data

Notes:

Click the following link (or enter part number in "SEARCH" on website) to obtain additional part information including price, inventory and certifications:
[806 to 960 MHz + 1710 to 2700 MHz Log Periodic Antenna, Low PIM, 9 to 10 dBi, V-pol, Dual band, Type N Female connector KP-LP1016](#)

806 to 960 MHz + 1710 to 2700 MHz Log Periodic Antenna, Low PIM, 9 to 10 dBi, V-pol, Dual band, Type N Female connector

KP-LP1016



Appendix

Electrical Downtilt: Angle in the antenna's elevation pattern in which the maximum gain occurs.

Gain: Antenna's average gain.

Front to Back Ratio @ 180°±30°: Average difference between the antenna's maximum gain and the maximum gain in the antenna's back lobe over ±30° angles.

Cross-polarization Ratio (dB): Typical difference between the co-polarization and cross-polarization gain across the sector's 3 dB Beam Width.

Dedicated to serving the needs of the Wireless Internet Service Provider (WISP) market, KP Performance Antennas offers purpose built products that reliably perform in the field. KP Performance Antennas product line consists of Yagi, Grid, Omni, Dish and other style antennas that operate in the 900 MHz, 2.4 GHz, 3 GHz, and 5 GHz frequencies.

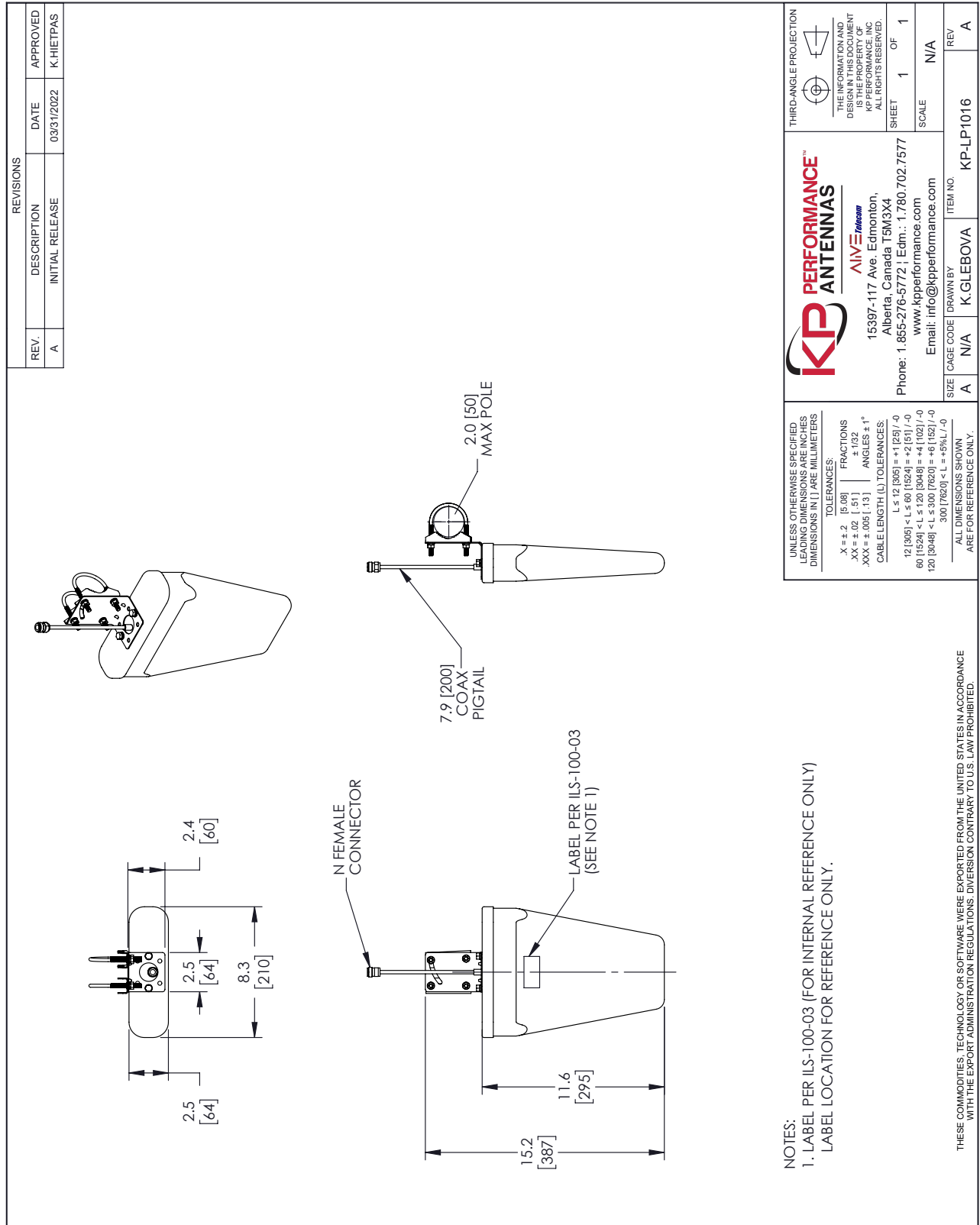
Click the following link (or enter part number in "SEARCH" on website) to obtain additional part information including price, inventory and certifications: [806 to 960 MHz + 1710 to 2700 MHz Log Periodic Antenna, Low PIM, 9 to 10 dBi, V-pol, Dual band, Type N Female connector KP-LP1016](#)

URL: <https://www.kpperformance.com/No-URL-Convention-Found-for-?KP-LP1016-p.aspx>

The information contained within this document is accurate to the best of our knowledge and representative of the part described herein. It may be necessary to make modifications to the part and/or the documentation of the part in order to implement improvements. KP Performance reserves the right to make such changes as required. Unless otherwise stated, all specifications are nominal. KP Performance does not make any representation or warranty regarding the suitability of the part described herein for any particular purpose, and KP Performance does not assume liability arising out of the use of any part or document.

806 to 960 MHz + 1710 to 2700 MHz Log Periodic Antenna, Low PIM,
 9 to 10 dBi, V-pol, Dual band, Type N Female connector

KP-LP1016 CAD Drawing



REVISIONS		
REV.	DESCRIPTION	DATE
A	INITIAL RELEASE	03/31/2022
		APPROVED
		K.HIETPAS

KP PERFORMANCE™
ANTENNAS
 ALIVE Telecom
 15397-117 Ave. Edmonton,
 Alberta, Canada T5M3X4
 Phone: 1.855-276-5772 | Edm.: 1.780.702.7577
 www.kpperformance.com
 Email: info@kpperformance.com

THIRD-ANGLE PROJECTION

THE INFORMATION AND DIMENSIONS SHOWN HEREIN ARE THE PROPERTY OF KP PERFORMANCE, INC. ALL RIGHTS RESERVED.

SHEET 1 OF 1

SCALE N/A

REV A

ITEM NO. KP-LP1016

SIZE A

CAGE CODE N/A

DRAWN BY K.GLEBOVA

UNLESS OTHERWISE SPECIFIED LEADING DIMENSIONS ARE IN INCHES DIMENSIONS IN [] ARE MILLIMETERS

TOLERANCES:
 .X ± .2 [5.08] FRACTIONS ± 1/32
 .XX ± .02 [.51] ANGLES ± 1°
 .XXX ± .005 [.13]

CABLE LENGTH (L) TOLERANCES:
 L ≤ 12 [305] = ± 1 [25] / -0
 12 [305] < L ≤ 60 [1524] = ± 2 [51] / -0
 60 [1524] < L ≤ 120 [3048] = ± 4 [102] / -0
 120 [3048] < L ≤ 300 [7620] = ± 6 [152] / -0
 300 [7620] < L = +5% / L / -0

ALL DIMENSIONS SHOWN ARE FOR REFERENCE ONLY.