

806 to 960 MHz + 1710 to 2500 MHz Log Periodic Antenna,
9 dBi, High Gain, Dual Band, Type N Female connector, V-pol

KP-LP1007



Features

- Frequency coverage for 806 MHz to 2500 MHz
- Very High Gain 9 dBi Directional Antenna
- Each connector covers wide band of frequencies
- Easy Install universal mounting bracket provided
- Weatherproof ABS radome
- Pigtail – 12 inches
- N-Type Female connector

Applications

- Point-to-point, LPWAN, LoRA, LTE-M, NB-IoT, IoT, M2M applications
- 5G / 4G LTE B1 to B11, B18 to B21, B23, B24, B25 / 3G / GSM / AWS / WLAN operation supported
- 5G Bands supported
- DAS (Distributed Antenna Systems)
- IEEE 802.11a / b / g / n / ac / ad / ah / ax Wi-Fi applications
- Public safety, utilities, CCTV and local radio coverage
- Smart cities expansion for coverage and IOT / IIOT

Description

The KP-LP1007 from KP Performance Antennas is a high-performance log periodic antenna specifically designed to aesthetically pleasing design. The KP-LP1007 operate from 806 to 2500 MHz for point-to-point applications, 5G, LTE, CMDA, LoRA, IoT, WIFI, where directivity and coverage are very important. The KP Performance Antennas KP-LP1007 has 9 dBi of gain which is ideal for boosting.

The KP Performance Antennas KP-LP1007 has Vertical polarization, 65 horizontal beamwidth, and 55 vertical beamwidth for point-to-point communication. The included mounting brackets allow for either vertical or horizontal mounting configurations with easy install instructions. Where there is weak coverage and needs to reach further distances, log periodic antennas are best. The directional KP-LP1007 antenna has 1 Type N Female connector on a 12 inches long pigtail.

KP Performance KP-LP1007 log periodic antenna operates in 5G bands n1, n2, n3, n5, n8, n18, n20, n25, n26, n30, n34, n39, n40, n41, n53, n65, n66, n67, n70, n80, n81, n82, n84, n86, n89, n90, n91, n92, n93, n94, n95, n97, n98 with a 9 dBi max. This 806 to 2500 MHz 5G directional log periodic antenna with Type N connector is in stock and ready to ship the same day. Our expert technical support and friendly, knowledgeable customer service personnel are available to assist you with your particular needs for high performance Log Periodic antenna engineered for superior performance antennas.

Configuration

Design	Log Periodic
Band Type	Multi
Radiation Pattern	Directional
Polarization	Vertical
Cable Type	Coax Cable
Cable Length	11.8 in [299.72 mm]
Connector Type	N Female
Number of Ports	1

Electrical Specifications

Description	Minimum	Typical	Maximum	Units
Input VSWR			1.5:1	
Impedance		50		Ohms
Gain			9	dBi

Click the following link (or enter part number in "SEARCH" on website) to obtain additional part information including price, inventory and certifications:
[806 to 960 MHz + 1710 to 2500 MHz Log Periodic Antenna, 9 dBi, High Gain, Dual Band, Type N Female connector, V-pol KP-LP1007](#)

806 to 960 MHz + 1710 to 2500 MHz Log Periodic Antenna,
 9 dBi, High Gain, Dual Band, Type N Female connector, V-pol



KP-LP1007

Front to Back Ratio	14	dB
Horizontal Beamwidth	65	Degrees
Vertical Beamwidth	55	Degrees
Input Power	100	Watts

Specifications by Band

Description	Band 1	Band 2	Band 3	Band 4	Band 5	Units
Range	0.806 to 0.96	1.71 to 2.5				GHz
Gain	9	9				dBi
Horizontal HPBW	65	65				Degrees
Vertical HPBW	55	55				Degrees
Front to Back Ratio	14	14				dB
VSWR Max	1.5:1	1.5:1				
Maximum Input Power	100	100				Watts

Mechanical Specifications

Radome Material	ABS
Size	
Length	11.8 in [299.72 mm]
Width	8.3 in [210.82 mm]
Height	2.9 in [73.66 mm]
Weight	1.8 lbs [816.47 g]

Environmental Specifications

Temperature	
Operating Range	-40 to +65 deg C
Wind Survivability	130.5 MPH [210.02 KPH]
Wind Loading	23.5 lbs at 100 MPH 36.2 lbs at 125 MPH

Plotted and Other Data

Notes:

Click the following link (or enter part number in "SEARCH" on website) to obtain additional part information including price, inventory and certifications:
[806 to 960 MHz + 1710 to 2500 MHz Log Periodic Antenna, 9 dBi, High Gain, Dual Band, Type N Female connector, V-pol KP-LP1007](#)

806 to 960 MHz + 1710 to 2500 MHz Log Periodic Antenna,
9 dBi, High Gain, Dual Band, Type N Female connector, V-pol

KP-LP1007



Appendix

Electrical Downtilt: Angle in the antenna's elevation pattern in which the maximum gain occurs.

Gain: Antenna's average gain.

Front to Back Ratio @ 180°±30°: Average difference between the antenna's maximum gain and the maximum gain in the antenna's back lobe over ±30° angles.

Cross-polarization Ratio (dB): Typical difference between the co-polarization and cross-polarization gain across the sector's 3 dB Beam Width.

Dedicated to serving the needs of the Wireless Internet Service Provider (WISP) market, KP Performance Antennas offers purpose built products that reliably perform in the field. KP Performance Antennas product line consists of Yagi, Grid, Omni, Dish and other style antennas that operate in the 900 MHz, 2.4 GHz, 3 GHz, and 5 GHz frequencies.

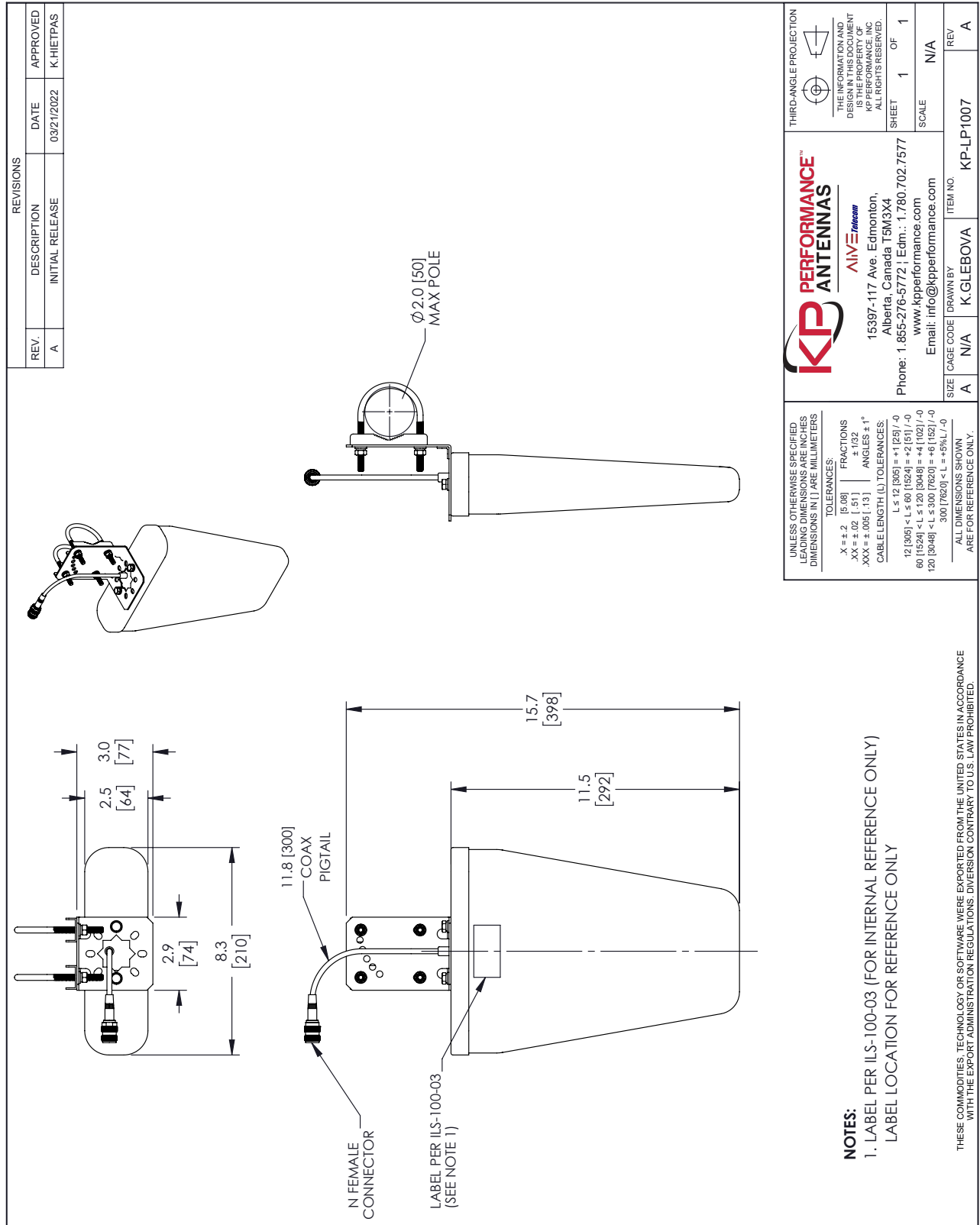
Click the following link (or enter part number in "SEARCH" on website) to obtain additional part information including price, inventory and certifications: [806 to 960 MHz + 1710 to 2500 MHz Log Periodic Antenna, 9 dBi, High Gain, Dual Band, Type N Female connector, V-pol KP-LP1007](#)

URL: <https://www.kpperformance.com/No-URL-Convention-Found-for-?KP-LP1007-p.aspx>

The information contained within this document is accurate to the best of our knowledge and representative of the part described herein. It may be necessary to make modifications to the part and/or the documentation of the part in order to implement improvements. KP Performance reserves the right to make such changes as required. Unless otherwise stated, all specifications are nominal. KP Performance does not make any representation or warranty regarding the suitability of the part described herein for any particular purpose, and KP Performance does not assume liability arising out of the use of any part or document.

806 to 960 MHz + 1710 to 2500 MHz Log Periodic Antenna, 9 dBi, High Gain, Dual Band, Type N Female connector, V-pol

KP-LP1007 CAD Drawing



REVISIONS			
REV.	DESCRIPTION	DATE	APPROVED
A	INITIAL RELEASE	03/21/2022	K.HIETPAS

UNLESS OTHERWISE SPECIFIED LEADING DIMENSIONS ARE INCHES DIMENSIONS IN [] ARE MILLIMETERS

TOLERANCES:

.X ± .2 [5.08]	FRACTIONS ± 1/32
.XX ± .02 [1.51]	ANGLES ± 1°
.XXX ± .005 [1.31]	

CABLE LENGTH (L) TOLERANCES:

L ≤ 12 [305]	± .1 [25] / -0
12 [305] < L ≤ 60 [1524]	± .2 [51] / -0
60 [1524] < L ≤ 120 [3048]	± .4 [102] / -0
120 [3048] < L ≤ 300 [7620]	± .6 [152] / -0
300 [7620] < L	± .5% L / -0

ALL DIMENSIONS SHOWN ARE FOR REFERENCE ONLY.

THIRD-ANGLE PROJECTION

THE INFORMATION AND DIMENSIONS CONTAINED HEREIN ARE THE PROPERTY OF KP PERFORMANCE, INC. ALL RIGHTS RESERVED.

SHEET 1 OF 1

SCALE N/A

KP PERFORMANCE™
ANTENNAS
 AIVE Telecom
 15397-117 Ave. Edmonton,
 Alberta, Canada T5M3X4
 Phone: 1.855-276-5772 | Edm.: 1.780.702.7577
 www.kpperformance.com
 Email: info@kpperformance.com

SIZE	CAGE CODE	DRAWN BY	ITEM NO.
A	N/A	K.GLEBOVA	KP-LP1007

REV A

NOTES:
 1. LABEL PER ILS-100-03 (FOR INTERNAL REFERENCE ONLY)
 LABEL LOCATION FOR REFERENCE ONLY

THESE COMMODITIES, TECHNOLOGY OR SOFTWARE WERE EXPORTED FROM THE UNITED STATES IN ACCORDANCE WITH THE EXPORT ADMINISTRATION REGULATIONS. DIVERSION CONTRARY TO U.S. LAW PROHIBITED.

T-Rev.D