

5150 MHz to 5850 MHz V/H Dual Polarization Flat Panel,
18 dBi gain, Ruggedized, 2 X N Female Connectors

KP-5DPFP18



Features

- Dual Polarity feed system in single enclosure
- Includes tilt and swivel mast mounting
- Two integral N-Female connectors
- UV-resistant radome for all-weather operation
- MIMO - Multiple-Input and Multiple-Output

Applications

- 5.3 GHz, 5.4 GHz and 5.8 GHz Band Applications
- IEEE 802.11a Wireless LAN
- 5.8GHz UNII and ISM Applications
- Unlicensed European 5.4 GHz Band Applications
- WiMAX Technology
- Wi-Fi Systems
- 5.8 GHz Wireless Video Systems

Description

The KP-5DPFP18 from KP Performance Antennas is a high performance flat panel antenna engineered for superior performance antenna specifically designed for rugged environments with a low profile aesthetically pleasing design. The KP-5DPFP18 operates from 5150 to 5850 MHz which is ideal for Point to Point applications where form factor is a concern. The KP Performance Antennas KP-5DPFP18 antenna has 18 dBi gain with 17° Horizontal Beamwidth and 17° Vertical Beamwidth polarization.

The 2 x Type N Female connectorized KP-5DPFP18 antenna from KP Performance Antennas excels in large open areas such as indoor courtyards, indoor sporting venues, convention centers and shopping malls. The mounting bracket and hardware are included for easy installation. Our expert technical support and friendly, knowledgeable customer service personnel are available to assist you with your particular needs for high performance flat panel antenna engineered for superior performance 5 GHz antennas.

Configuration

Design	Flat Panel
Band Type	Single
Radiation Pattern	Directional
Polarization	Vertical/Horizontal
Connector Type	N Female
Number of Ports	2

Electrical Specifications

Description	Minimum	Typical	Maximum	Units
Frequency Range	5.15		5.85	GHz
Input VSWR			2:1	
Impedance		50		Ohms
Gain		18		dBi
Front to Back Ratio	30			dB
Port to Port Isolation	28			dB
Input Power			20	Watts

Mechanical Specifications

Click the following link (or enter part number in "SEARCH" on website) to obtain additional part information including price, inventory and certifications:
[5150 MHz to 5850 MHz V/H Dual Polarization Flat Panel, 18 dBi gain, Ruggedized, 2 X N Female Connectors KP-5DPFP18](#)

5150 MHz to 5850 MHz V/H Dual Polarization Flat Panel,
18 dBi gain, Ruggedized, 2 X N Female Connectors

KP-5DPFP18



Radome Material	UV Resistant ABS
Size	
Length	9.8 in [248.92 mm]
Width	1.6 in [40.64 mm]
Height	9.8 in [248.92 mm]
Mounting Mast Diameter	1.57 to 1.97 in [39.88 to 50.04 mm]
Weight	2.42 lbs [1.1 kg]

Environmental Specifications

Temperature	
Operating Range	-40 to +70 deg C
Wind Survivability	124.27 MPH [199.99 KPH]
Humidity	5 to 95

Plotted and Other Data

Notes:

Click the following link (or enter part number in "SEARCH" on website) to obtain additional part information including price, inventory and certifications:
[5150 MHz to 5850 MHz V/H Dual Polarization Flat Panel, 18 dBi gain, Ruggedized, 2 X N Female Connectors KP-5DPFP18](#)

5150 MHz to 5850 MHz V/H Dual Polarization Flat Panel,
18 dBi gain, Ruggedized, 2 X N Female Connectors

KP-5DPFP18



Appendix

Electrical Downtilt: Angle in the antenna's elevation pattern in which the maximum gain occurs.

Gain: Antenna's average gain.

Front to Back Ratio @ 180°±30°: Average difference between the antenna's maximum gain and the maximum gain in the antenna's back lobe over ±30° angles.

Cross-polarization Ratio (dB): Typical difference between the co-polarization and cross-polarization gain across the sector's 3 dB Beam Width.

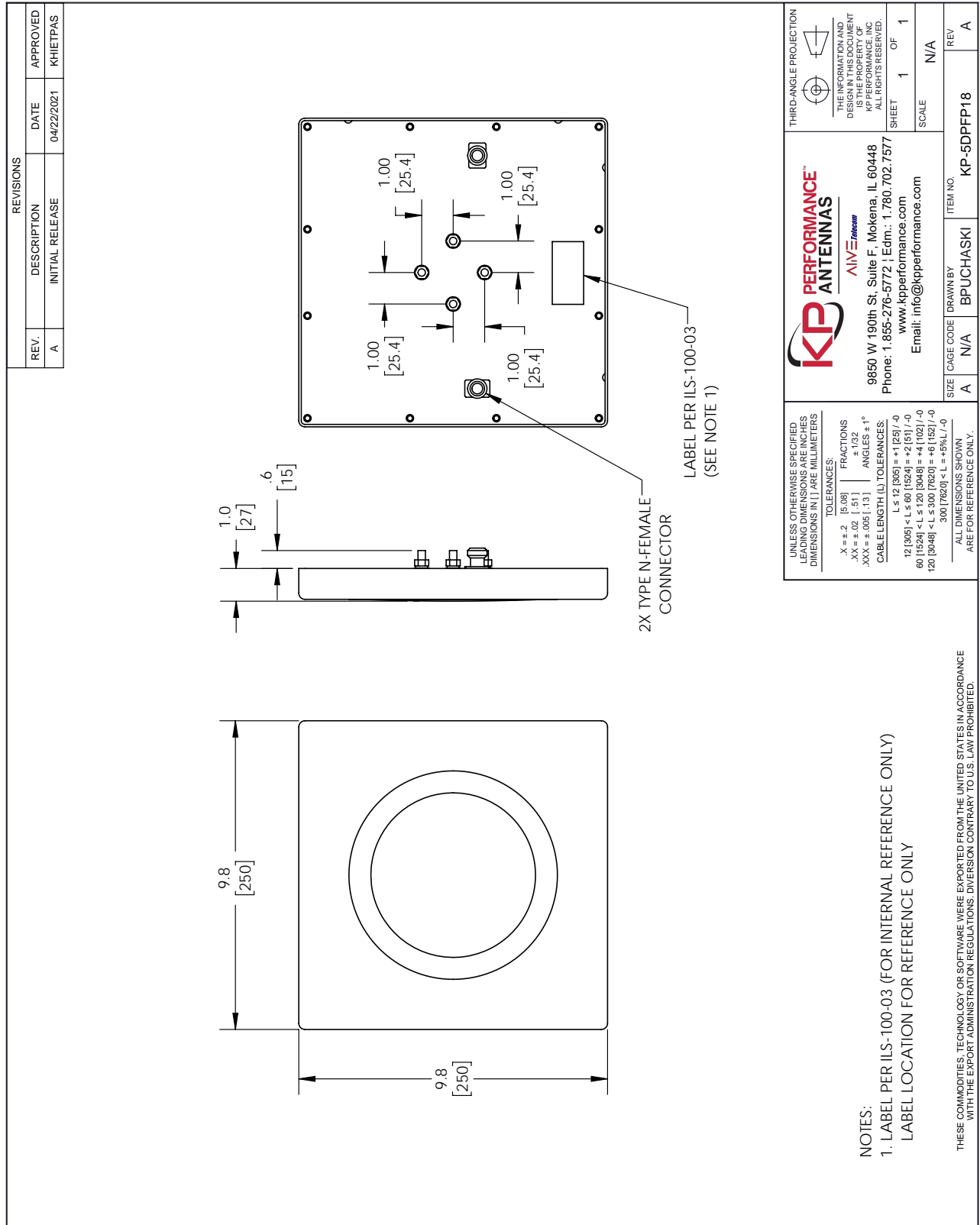
Dedicated to serving the needs of the Wireless Internet Service Provider (WISP) market, KP Performance Antennas offers purpose built products that reliably perform in the field. KP Performance Antennas product line consists of Yagi, Grid, Omni, Dish and other style antennas that operate in the 900 MHz, 2.4 GHz, 3 GHz, and 5 GHz frequencies.

Click the following link (or enter part number in "SEARCH" on website) to obtain additional part information including price, inventory and certifications: [5150 MHz to 5850 MHz V/H Dual Polarization Flat Panel, 18 dBi gain, Ruggedized, 2 X N Female Connectors KP-5DPFP18](https://www.kpperformance.com/5150-mhz-to-5850-mhz-515-ghz-to-585-ghz-18-dbi-vh-dual-pol-flat-panel-antenna-kp-5dpfp18-p.aspx)

URL: <https://www.kpperformance.com/5150-mhz-to-5850-mhz-515-ghz-to-585-ghz-18-dbi-vh-dual-pol-flat-panel-antenna-kp-5dpfp18-p.aspx>

The information contained within this document is accurate to the best of our knowledge and representative of the part described herein. It may be necessary to make modifications to the part and/or the documentation of the part in order to implement improvements. KP Performance reserves the right to make such changes as required. Unless otherwise stated, all specifications are nominal. KP Performance does not make any representation or warranty regarding the suitability of the part described herein for any particular purpose, and KP Performance does not assume liability arising out of the use of any part or document.

KP-5DPFP18 CAD Drawing



NOTES:
 1. LABEL PER ILS-100-03 (FOR INTERNAL REFERENCE ONLY)
 LABEL LOCATION FOR REFERENCE ONLY

THESE COMMODITIES, TECHNOLOGY OR SOFTWARE WERE EXPORTED FROM THE UNITED STATES IN ACCORDANCE WITH THE EXPORT ADMINISTRATION REGULATIONS. DIVERSION CONTRARY TO U.S. LAW PROHIBITED.

T-Rev.D