

31.5 dBi Active GPS/BeiDou Magnet Mount Antenna RHCP 1561/1575 MHz, RG174 SMA Male IPX6

KPANGPS1014



Features

- SMA Male
- Right Hand Circular Polarized
- 28 dB LNA w/ low 1.5 dB Noise Figure
- Neodymium Rare-Earth Magnet
- IPX6 Rated

Applications

- GPS L1/BDS B1
- High Accuracy Global Positioning
- Precision Agriculture, Mining and Construction
- Law Enforcement and Public Safety
- Vehicle Fleet Management

Description

KP Performance's Active GNSS Antenna KPANGPS1014 is Right Hand Circular Polarized with an integrated Neodymium Rare Earth Magnet for a secure mount. The KPANGPS1014 is an active GPS L1 and BDS B1 band antenna with 31.5 dBi Gain. These Magnet Mount active GNSS antenna units are ideally suited for use on vehicles where low profile, low drag, non-penetrating style antennas are needed.

Our GNSS antenna specialists are ready and available to answer any questions you may have on the KPANGPS1014. This high quality SMA male antenna meets GPS L1 and BDS B1 requirements by operating in the 1559 MHz to 1577 MHz frequency range.

The KPANGPS1014 GNSS antenna series from KP are designed for mobile, vehicle, or fleet services to receive GNSS signals from satellite constellations to triangulate geolocations for navigation, tracking, and surveying.

Configuration

Design	GPS Active
Band Type	Single
Polarization	RHCP
Cable Type	RG174
Connector Type	SMA Male
Number of Ports	1

Electrical Specifications

Description	Minimum	Typical	Maximum	Units
Frequency Range	1,559		1,577	MHz
Input VSWR			1.5:1	
Output VSWR			2:1	
Impedance		50		Ohms
Gain		31.5		dBi
Gain Variation		±5		dBi
Out Of Band Rejection	30			dB
Operating DC Voltage	3		5	Volts
Current	6	9	12	mA

Click the following link (or enter part number in "SEARCH" on website) to obtain additional part information including price, inventory and certifications:
[31.5 dBi Active GPS/BeiDou Magnet Mount Antenna RHCP 1561/1575 MHz, RG174 SMA Male IPX6 KPANGPS1014](#)

31.5 dBi Active GPS/BeiDou Magnet Mount Antenna
 RHCP 1561/1575 MHz, RG174 SMA Male IPX6

KPANGPS1014



Specifications by Band

Description	Band 1	Band 2	Band 3	Band 4	Band 5	Units
Range	1.559 to 1.563	1.574 to 1.577				GHz
Center Frequency	1.561	1.575				GHz

Mechanical Specifications

Size

Length	1.9 in [48.26 mm]
Width	1.5 in [38.1 mm]
Height	0.6 in [15.24 mm]
Weight	0.2 lbs [90.72 g]

Environmental Specifications

Compliance Certifications (see [product page](#) for current document)

IP Rating	IPX6
-----------	------

Plotted and Other Data

Notes:

Click the following link (or enter part number in "SEARCH" on website) to obtain additional part information including price, inventory and certifications:
[31.5 dBi Active GPS/BeiDou Magnet Mount Antenna RHCP 1561/1575 MHz, RG174 SMA Male IPX6 KPANGPS1014](#)

31.5 dBi Active GPS/BeiDou Magnet Mount Antenna
RHCP 1561/1575 MHz, RG174 SMA Male IPX6

KPANGPS1014



Appendix

Electrical Downtilt: Angle in the antenna's elevation pattern in which the maximum gain occurs.

Gain: Antenna's average gain.

Front to Back Ratio @ 180°±30°: Average difference between the antenna's maximum gain and the maximum gain in the antenna's back lobe over ±30° angles.

Cross-polarization Ratio (dB): Typical difference between the co-polarization and cross-polarization gain across the sector's 3 dB Beam Width.

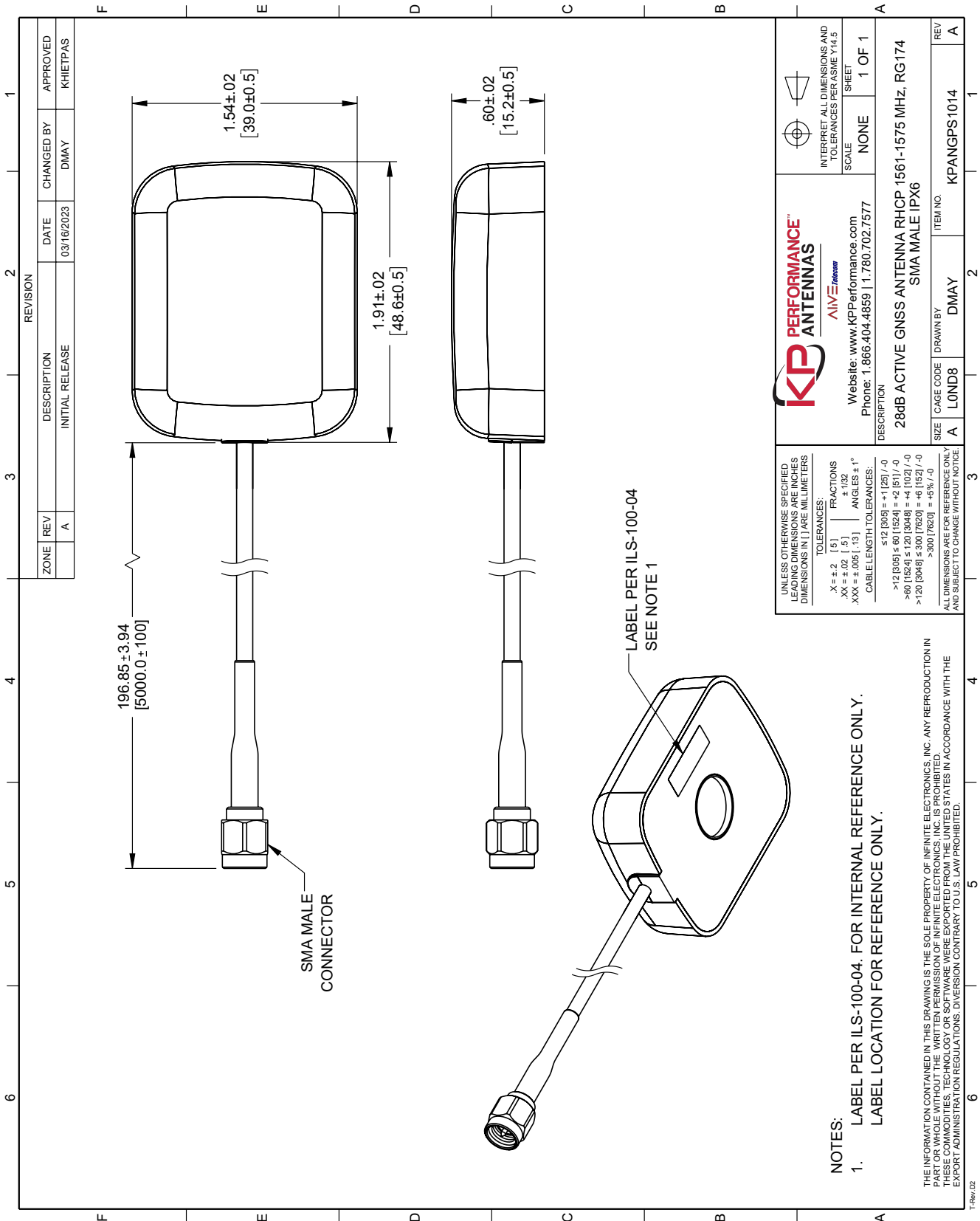
Dedicated to serving the needs of the Wireless Internet Service Provider (WISP) market, KP Performance Antennas offers purpose built products that reliably perform in the field. KP Performance Antennas product line consists of Yagi, Grid, Omni, Dish and other style antennas that operate in the 900 MHz, 2.4 GHz, 3 GHz, and 5 GHz frequencies.

Click the following link (or enter part number in "SEARCH" on website) to obtain additional part information including price, inventory and certifications: [31.5 dBi Active GPS/BeiDou Magnet Mount Antenna RHCP 1561/1575 MHz, RG174 SMA Male IPX6 KPANGPS1014](#)

URL:

The information contained within this document is accurate to the best of our knowledge and representative of the part described herein. It may be necessary to make modifications to the part and/or the documentation of the part in order to implement improvements. KP Performance reserves the right to make such changes as required. Unless otherwise stated, all specifications are nominal. KP Performance does not make any representation or warranty regarding the suitability of the part described herein for any particular purpose, and KP Performance does not assume liability arising out of the use of any part or document.

KPANGPS1014 CAD Drawing



ZONE		REVISION		CHANGED BY		APPROVED	
A		INITIAL RELEASE		DMAY		KHIETPAS	
				03/16/2023			

<p>PERFORMANCE™ ANTENNAS</p> <p>AIMZ <small>Member</small></p> <p>Website: www.kpperformance.com Phone: 1.866.404.4859 1.780.702.7577</p>		<p>INTERPRET ALL DIMENSIONS AND TOLERANCES PER ASME Y14.5</p> <p>SCALE: NONE</p> <p>SHEET: 1 OF 1</p>
<p>DESCRIPTION: 28dB ACTIVE GNSS ANTENNA RHCP 1561-1575 MHz, RG174 SMA MALE IPX6</p>		
SIZE: A	CAGE CODE: LOND8	ITEM NO: KPANGPS1014
DRAWN BY: DMAY		REV: A

UNLESS OTHERWISE SPECIFIED, LEADING DIMENSIONS ARE INCHES, DIMENSIONS IN [] ARE MILLIMETERS.

TOLERANCES:
 X = ± 0.2 [5] FRACTIONS
 XX = ± 0.02 [0.5] ANGLES ± 1°
 XXX = ± 0.005 [0.13] ANGLES ± 1°

CABLE LENGTH TOLERANCES:
 ≤ 12 [305] = ± 0.125 [-0]
 > 12 [305] ≤ 60 [1524] = ± 0.151 [-0]
 > 60 [1524] ≤ 120 [3048] = ± 0.102 [-0]
 > 120 [3048] ≤ 300 [7620] = ± 0.152 [-0]
 > 300 [7620] = ± 0.5% [-0]

ALL DIMENSIONS ARE FOR REFERENCE ONLY AND SUBJECT TO CHANGE WITHOUT NOTICE.

NOTES:
 1. LABEL PER ILS-100-04. FOR INTERNAL REFERENCE ONLY.
 LABEL LOCATION FOR REFERENCE ONLY.

THE INFORMATION CONTAINED IN THIS DRAWING IS THE SOLE PROPERTY OF INFINITE ELECTRONICS, INC. ANY REPRODUCTION IN PART OR WHOLE WITHOUT THE WRITTEN PERMISSION OF INFINITE ELECTRONICS, INC. IS PROHIBITED. THESE COMMODITIES, TECHNOLOGY OR SOFTWARE WERE EXPORTED FROM THE UNITED STATES IN ACCORDANCE WITH THE EXPORT ADMINISTRATION REGULATIONS. DIVERSION CONTRARY TO U.S. LAW PROHIBITED.

T-Rev: 02