

2400-2500, 5150-5850, 6000-7125 MHz WiFi 6e/7 Flat Panel MIMO Antenna, 11 dBi, 6 x RG56 3-Foot N Male Pigtails

**KPANFP1046**



**Features**

- N Type Male Connector
- 6 x Vertical Polarization
- 6x6 MIMO Functionality
- Outdoor Rated Flat Panel Antenna
- 2.4 GHz, 5 GHz, 6 GHz Wi-Fi Bands
- 11 dBi gain

**Applications**

- Infotainment systems, Routers, Wi-Fi hotspots, HD video transmission, Gateways, Dash cameras, Public transportation
- Connected cars or self-driving cars, Fleet management, Logistics
- Public Safety Networks
- Zigbee, Bluetooth, Wi-Fi

**Description**

The KPANFP1046 Wi-Fi 6e Antenna from KP Performance is a high performance directional antenna designed for the 2400 MHz to 7125 MHz bands and is available to ship same day. It is a UV protected, outdoor rated antenna with directional pattern. The KPANFP1046 is ideally suited for 802.11 protocols including 802.11ax as well as Zigbee, Bluetooth and is 6x6 MIMO capable.

The KP Performance high performance KPANFP1046 is a rugged antenna providing broad coverage, low latency, increased network capacity and 11 dBi gain. This 6 port N Male directional antenna is suitable for commercial radios and access points in public and private networks that are equipped with N Type connectors.

This Wi-Fi 6e KPANFP1046 antenna with 6 N Male connectors, as well as our wide selection of superior quality RF parts, ships same day. Contact our knowledgeable and friendly technical support and sales staff for your answers on antennas or other KP Performance products.

**Configuration**

Design	Flat Panel
Application Band	MIMO
Band Type	Multi
Radiation Pattern	Directional
Polarization	Vertical
Connector Type	N Male
Number of Ports	6
Lightning Protection	DC Grounded

**Electrical Specifications**

Description	Minimum	Typical	Maximum	Units
Frequency Range	2,400		7,125	MHz
Input VSWR			2:1	
Impedance		50		Ohms
Input Power			50	Watts

**Specifications by Band**

Click the following link (or enter part number in "SEARCH" on website) to obtain additional part information including price, inventory and certifications: [2400-2500, 5150-5850, 6000-7125 MHz WiFi 6e/7 Flat Panel MIMO Antenna, 11 dBi, 6 x RG56 3-Foot N Male Pigtails KPANFP1046](#)

2400-2500, 5150-5850, 6000-7125 MHz WiFi 6e/7 Flat Panel MIMO Antenna, 11 dBi, 6 x RG56 3-Foot N Male Pigtailed



**KPANFP1046**

Description	Band 1	Band 2	Band 3	Band 4	Band 5	Units
Range	2.4 to 2.5	5.15 to 5.85	6 to 7.125			GHz
Gain	9	11	11			dBi
Horizontal HPBW	120	115	110			Degrees
Vertical HPBW	28	15	12			Degrees
Port to Port Isolation	20	25	25			dB
Front to Back Ratio	25	25	25			dB
VSWR Max	2:1	2:1	2:1			
Maximum Input Power	50	50	50			Watts

**Mechanical Specifications**

Radome Material	ABS
Mounting Application	Indoor/Outdoor
<b>Size</b>	
Length	24 in [609.6 mm]
Width	19 in [482.6 mm]
Height	2.6 in [66.04 mm]
Mounting Mast Diameter	1.6 to 2.4 in [40.64 to 60.96 mm]
Weight	13.9 lbs [6.3 kg]

**Environmental Specifications**

<b>Temperature</b>	
Operating Range	-40 to +70 deg C
Humidity	5 to 95%

**Plotted and Other Data**

Notes:

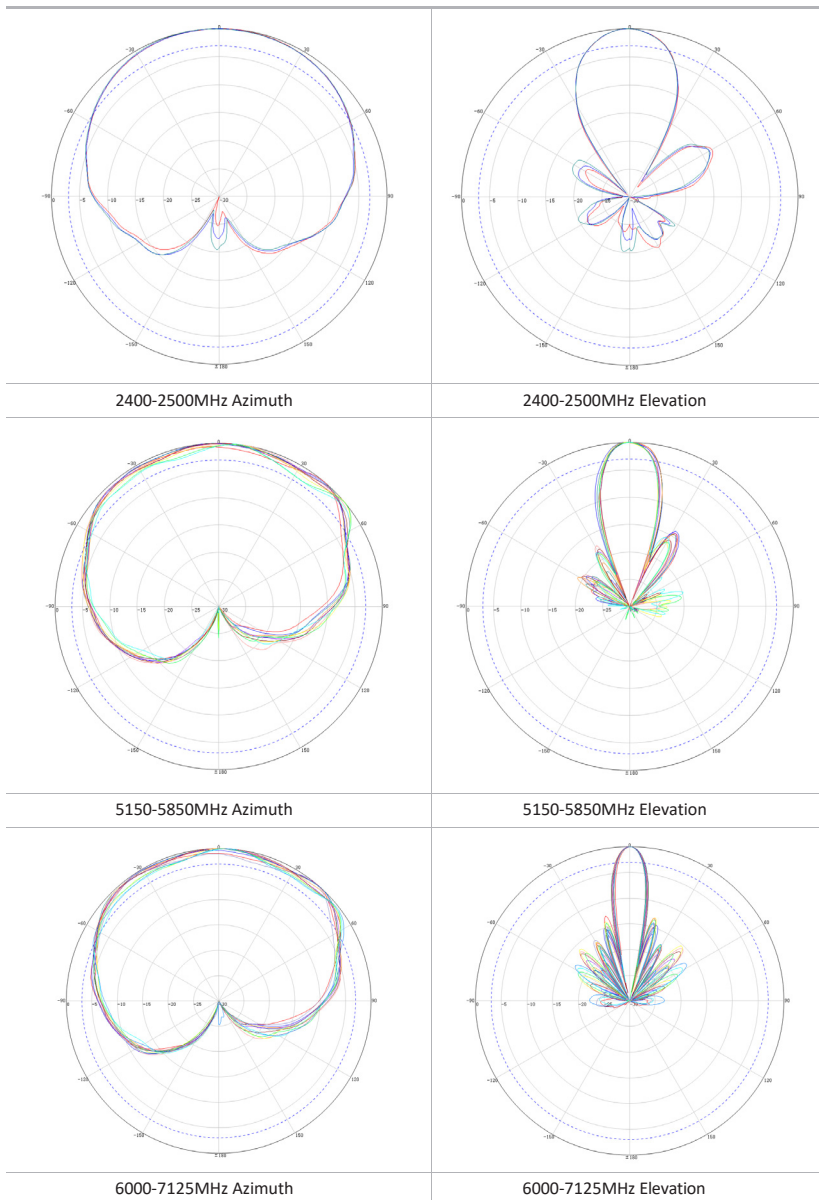
Click the following link (or enter part number in "SEARCH" on website) to obtain additional part information including price, inventory and certifications:  
[2400-2500, 5150-5850, 6000-7125 MHz WiFi 6e/7 Flat Panel MIMO Antenna, 11 dBi, 6 x RG56 3-Foot N Male Pigtailed KPANFP1046](#)

2400-2500, 5150-5850, 6000-7125 MHz WiFi 6e/7 Flat Panel MIMO Antenna, 11 dBi, 6 x RG56 3-Foot N Male Pigtailed



**KPANFP1046**

**Typical Radiation Pattern**



Click the following link (or enter part number in "SEARCH" on website) to obtain additional part information including price, inventory and certifications:  
[2400-2500, 5150-5850, 6000-7125 MHz WiFi 6e/7 Flat Panel MIMO Antenna, 11 dBi, 6 x RG56 3-Foot N Male Pigtailed KPANFP1046](#)

2400-2500, 5150-5850, 6000-7125 MHz WiFi 6e/7 Flat Panel MIMO Antenna, 11 dBi, 6 x RG56 3-Foot N Male Pigtailed

**KPANFP1046**



---

## Appendix

**Electrical Downtilt:** Angle in the antenna's elevation pattern in which the maximum gain occurs.

**Gain:** Antenna's average gain.

**Front to Back Ratio @ 180°±30°:** Average difference between the antenna's maximum gain and the maximum gain in the antenna's back lobe over ±30° angles.

**Cross-polarization Ratio (dB):** Typical difference between the co-polarization and cross-polarization gain across the sector's 3 dB Beam Width.

Dedicated to serving the needs of the Wireless Internet Service Provider (WISP) market, KP Performance Antennas offers purpose built products that reliably perform in the field. KP Performance Antennas product line consists of Yagi, Grid, Omni, Dish and other style antennas that operate in the 900 MHz, 2.4 GHz, 3 GHz, and 5 GHz frequencies.

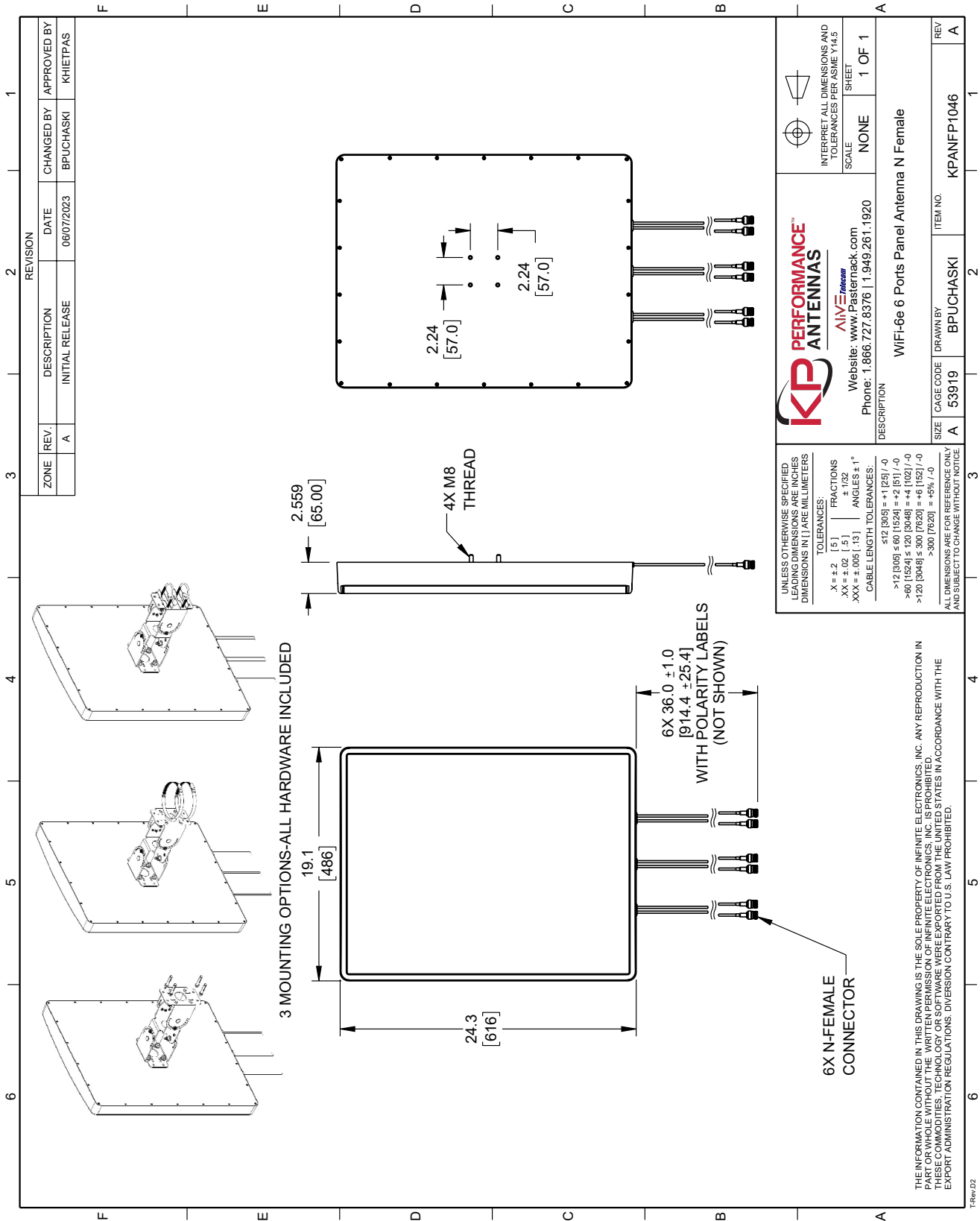
Click the following link (or enter part number in "SEARCH" on website) to obtain additional part information including price, inventory and certifications: [2400-2500, 5150-5850, 6000-7125 MHz WiFi 6e/7 Flat Panel MIMO Antenna, 11 dBi, 6 x RG56 3-Foot N Male Pigtailed KPANFP1046](https://www.kpperformance.com/2400-2500-5150-5850-6000-7125-mhz-flat-panel-mimo-antenna-11-dbi-gain-6-n-type-male-connectors-kpanfp1046-p.aspx)

URL: <https://www.kpperformance.com/2400-2500-5150-5850-6000-7125-mhz-flat-panel-mimo-antenna-11-dbi-gain-6-n-type-male-connectors-kpanfp1046-p.aspx>

The information contained within this document is accurate to the best of our knowledge and representative of the part described herein. It may be necessary to make modifications to the part and/or the documentation of the part in order to implement improvements. KP Performance reserves the right to make such changes as required. Unless otherwise stated, all specifications are nominal. KP Performance does not make any representation or warranty regarding the suitability of the part described herein for any particular purpose, and KP Performance does not assume liability arising out of the use of any part or document.

2400-2500, 5150-5850, 6000-7125 MHz WiFi 6e/7 Flat Panel MIMO Antenna, 11 dBi, 6 x RG56 3-Foot N Male Pigtails

KPANFP1046 CAD Drawing



REVISION		DATE	CHANGED BY	APPROVED BY
ZONE	REV.	DESCRIPTION	INITIAL RELEASE	
	A		06/07/2023	BPUCHASKI
				KHIETPAS

**KPP PERFORMANCE ANTENNAS**  
 AIV3 *Antenna*  
 Website: www.kppperformance.com  
 Phone: 1.866.727.8376 | 1.949.261.1920

INTERPRET ALL DIMENSIONS AND TOLERANCES PER ASME Y14.5  
 SCALE NONE  
 SHEET 1 OF 1

DESCRIPTION: WiFi-6e 6 Ports Panel Antenna N Female

SIZE	CAGE CODE	DRAWN BY	ITEM NO.
A	53919	BPUCHASKI	KPANFP1046

UNLESS OTHERWISE SPECIFIED LEADING DIMENSIONS ARE INCHES DIMENSIONS IN [ ] ARE MILLIMETERS  
 TOLERANCES:  
 .X = ±.2 [5] FRACTIONS ± 1/32  
 .XX = ±.02 [0.5] ANGLES ± 1°  
 .XXX = ±.005 [0.13] CABLE LENGTH TOLERANCES:  
 ≤12 [305] = ±1 [25] / -0  
 >12 [305] ≤ 60 [1524] = +2 [51] / -0  
 >60 [1524] ≤ 120 [3048] = +4 [102] / -0  
 >120 [3048] ≤ 300 [7620] = +6 [152] / -0  
 >300 [7620] = +5% / -0  
 ALL DIMENSIONS ARE FOR REFERENCE ONLY AND SUBJECT TO CHANGE WITHOUT NOTICE.

THE INFORMATION CONTAINED IN THIS DRAWING IS THE SOLE PROPERTY OF INFINITE ELECTRONICS, INC. ANY REPRODUCTION IN PART OR WHOLE WITHOUT THE WRITTEN PERMISSION OF INFINITE ELECTRONICS, INC. IS PROHIBITED. THESE COMMODITIES, TECHNOLOGY OR SOFTWARE WERE EXPORTED FROM THE UNITED STATES IN ACCORDANCE WITH THE EXPORT ADMINISTRATION REGULATIONS. DIVISION CONTRARY TO U.S. LAW PROHIBITED.