



2.4 GHz, 8 dBi, Omni Antenna with Spring Base N-Male Connector

Antennas Technical Data Sheet

KP-24-SPOMAFLEX-8-NM

Features

- Flexible Spring Base for Antenna Flexibility
- Can be Mounted on Magnetic base or Permanent Base (order separately)
- Weather-Proof, High Performance
- Fixed Mounts Available
- Compact Size

Applications

- 2.4 GHz ISM Band
- IEEE 802.11b and 802.11g Wireless LAN
- IEEE 802.11n (Pre-N, Draft-N) Applications
- WiFi & Wireless Video Systems
- Wireless Video Systems & Multipoint and Mobile Applications

Description

The KP Performance Antenna KP-24-SPOMAFLEX-8-NM is a high performance omni-directional elevated feed antenna designed for the 2.4 GHz ISM band with a flexible spring base. This compact and lightweight antenna is ideally suited for IEEE 802.11b and 802.11g, 802.11n, 802.11ax (WiFi 6) wireless LANs, IOT, public wireless hotspots, Bluetooth® and other multipoint and mobile applications where high gain and wide coverage is desired. This antenna features a co-linear stacked design with an elevated feed point. This allows the antenna to operate using a very small ground plane.

Measuring 17.5" long, the omnidirectional KP-24-SPOMAFLEX-8-NM from KP Performance Antenna features an aesthetic black finish. It features a built-in shock spring and is designed with a standard N-Male connector that allows for ease of installation to similar N-Female mounting systems (mobile and fixed mounts). In addition to shipping the same day, our 2.4 GHz omnidirectional antennas are high-quality components backed by expert technical support and sales personnel.

Configuration

| | |
|-----------------|----------------|
| Design | Omni |
| Frequency Range | 2.4 to 2.5 GHz |
| Polarization | Vertical |
| Connector Type | N Male |
| Number of Ports | 1 |

Electrical Specifications

| Description | Minimum | Typical | Maximum | Units |
|---------------------------------|---------|---------|---------|---------|
| Impedance | | 50 | | Ohms |
| Gain Nominal | | 8 | | dBi |
| Horizontal (Azimuth) Beam Width | | 360 | | Degrees |
| Input Power | | | 50 | Watts |
| VSWR | | | 2:1 | |

Click the following link (or enter part number in "SEARCH" on website) to obtain additional part information including price, inventory and certifications: [2.4 GHz, 8 dBi, Omni Antenna with Spring Base N-Male Connector KP-24-SPOMAFLEX-8-NM](#)



2.4 GHz, 8 dBi, Omni Antenna with Spring Base N-Male Connector

Antennas Technical Data Sheet

KP-24-SPOMAFLEX-8-NM

Mechanical Specifications

| | |
|---------------------------------|---------------------|
| Radome Material | Fiberglass |
| Size | |
| Length | 17.5 in [444.5 mm] |
| Weight | 0.36 lbs [163.29 g] |
| Mounting | |
| Mount Type | Type-N Male |
| Mechanical Specification Notes: | |

Environmental Specifications

Compliance Certifications (see [product page](#) for current document)

Plotted and Other Data

Notes:

Dedicated to serving the needs of the Wireless Internet Service Provider (WISP) market, KP Performance Antennas offers purpose built products that reliably perform in the field. KP Performance Antennas product line consists of Yagi, Grid, Omni, Dish and other style antennas that operate in the 900 MHz, 2.4 GHz, 3 GHz, and 5 GHz frequencies.

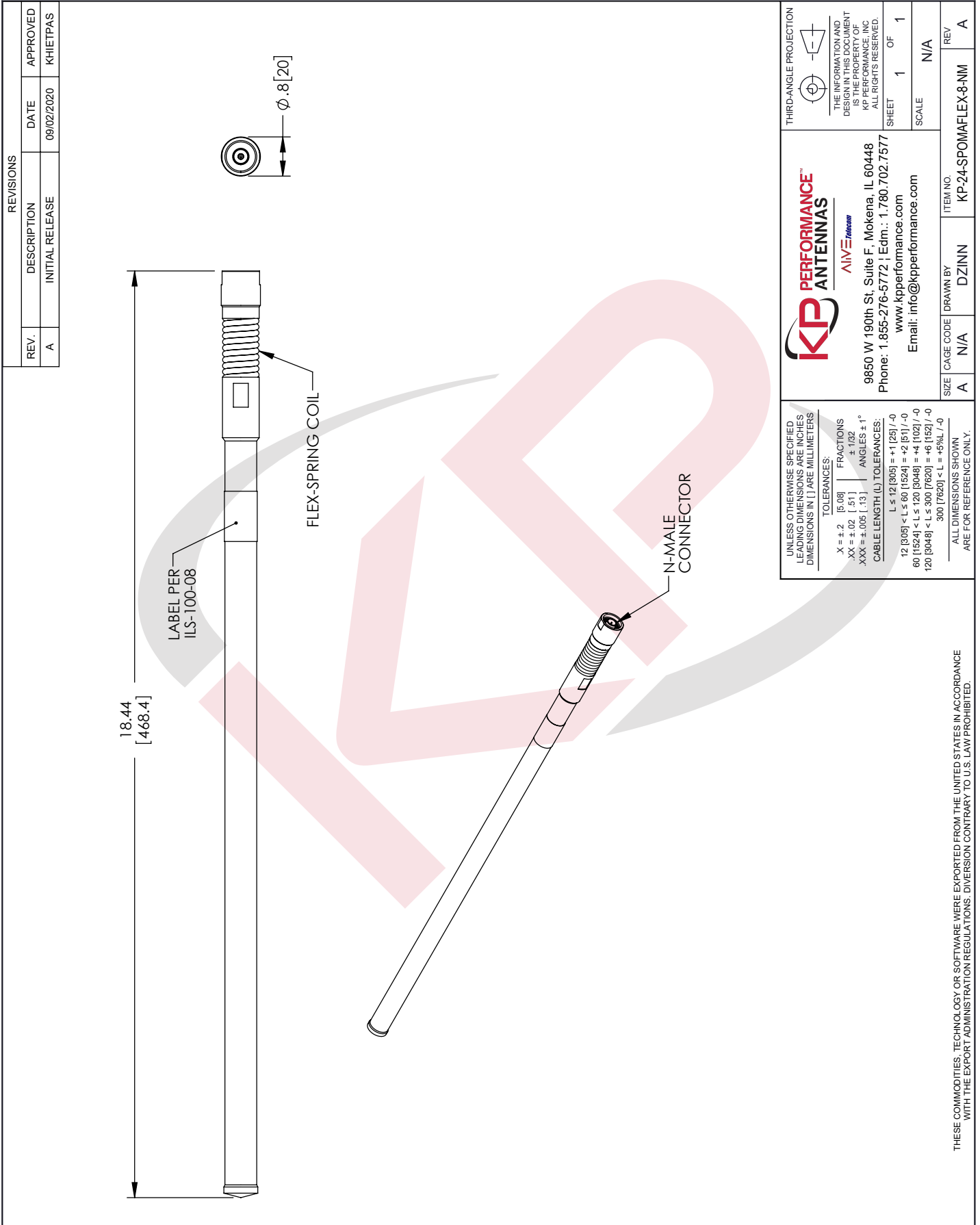
Click the following link (or enter part number in "SEARCH" on website) to obtain additional part information including price, inventory and certifications: [2.4 GHz, 8 dBi, Omni Antenna with Spring Base N-Male Connector KP-24-SPOMAFLEX-8-NM](#)

URL: <https://www.kpperformance.com/2-4ghz-8dbi-omni-antenna-spring-base-n-male-connector-kp-24-spomaflex-8-nm-p.aspx>

The information contained in this document is accurate to the best of our knowledge and representative of the part described herein. It may be necessary to make modifications to the part and/or the documentation of the part, in order to implement improvements. KP Performance reserves the right to make such changes as required. Unless otherwise stated, all specifications are nominal. KP Performance does not make any representation or warranty regarding the suitability of the part described herein for any particular purpose, and KP Performance does not assume any liability arising out of the use of any part or documentation.

KP-24-SPOMAFLEX-8-NM CAD Drawing

2.4 GHz, 8 dBi, Omni Antenna with Spring Base N-Male Connector



| REVISIONS | | | |
|-----------|-----------------|------------|----------|
| REV. | DESCRIPTION | DATE | APPROVED |
| A | INITIAL RELEASE | 09/02/2020 | KHIETPAS |

| | | |
|---|--|---|
| <p>UNLESS OTHERWISE SPECIFIED LEADING DIMENSIONS ARE INCHES DIMENSIONS IN [] ARE MILLIMETERS</p> <p>TOLERANCES:</p> <p>X = +.2 [5.08] FRACTIONS XX = +.02 [.51] +.132 XXX = ±.005 [.13] ANGLES ± 1°</p> <p>CABLE LENGTH (L) TOLERANCES:</p> <p>L ≤ 12 [305] < L ≤ 60 [1524] = +.1 [25] / -0 60 [1524] < L ≤ 120 [3048] = +.4 [102] / -0 120 [3048] < L ≤ 300 [7620] = +.6 [152] / -0 300 [7620] < L = +.9% / -0</p> <p>ALL DIMENSIONS SHOWN ARE FOR REFERENCE ONLY.</p> |  <p>PERFORMANCE™ ANTENNAS <i>ALIVE™</i></p> <p>9850 W 190th St, Suite F, Mokena, IL 60448 Phone: 1.855-276-5772 Edm.: 1.780.702.7577 www.kpperformance.com Email: info@kpperformance.com</p> | <p>THIRD-ANGLE PROJECTION</p>  <p>THE INFORMATION AND DESIGN IN THIS DOCUMENT IS THE PROPERTY OF KP PERFORMANCE, INC ALL RIGHTS RESERVED.</p> <p>SHEET 1 OF 1</p> <p>SCALE N/A</p> |
| <p>SIZE [CAGE CODE] DRAWN BY [ITEM NO.]</p> <p>A [N/A] DZINN KP-24-SPOMAFLEX-8-NM</p> | <p>REV A</p> | |

THESE COMMODITIES, TECHNOLOGY OR SOFTWARE WERE EXPORTED FROM THE UNITED STATES IN ACCORDANCE WITH THE EXPORT ADMINISTRATION REGULATIONS. DIVERSION CONTRARY TO U.S. LAW PROHIBITED.

T1Rev D